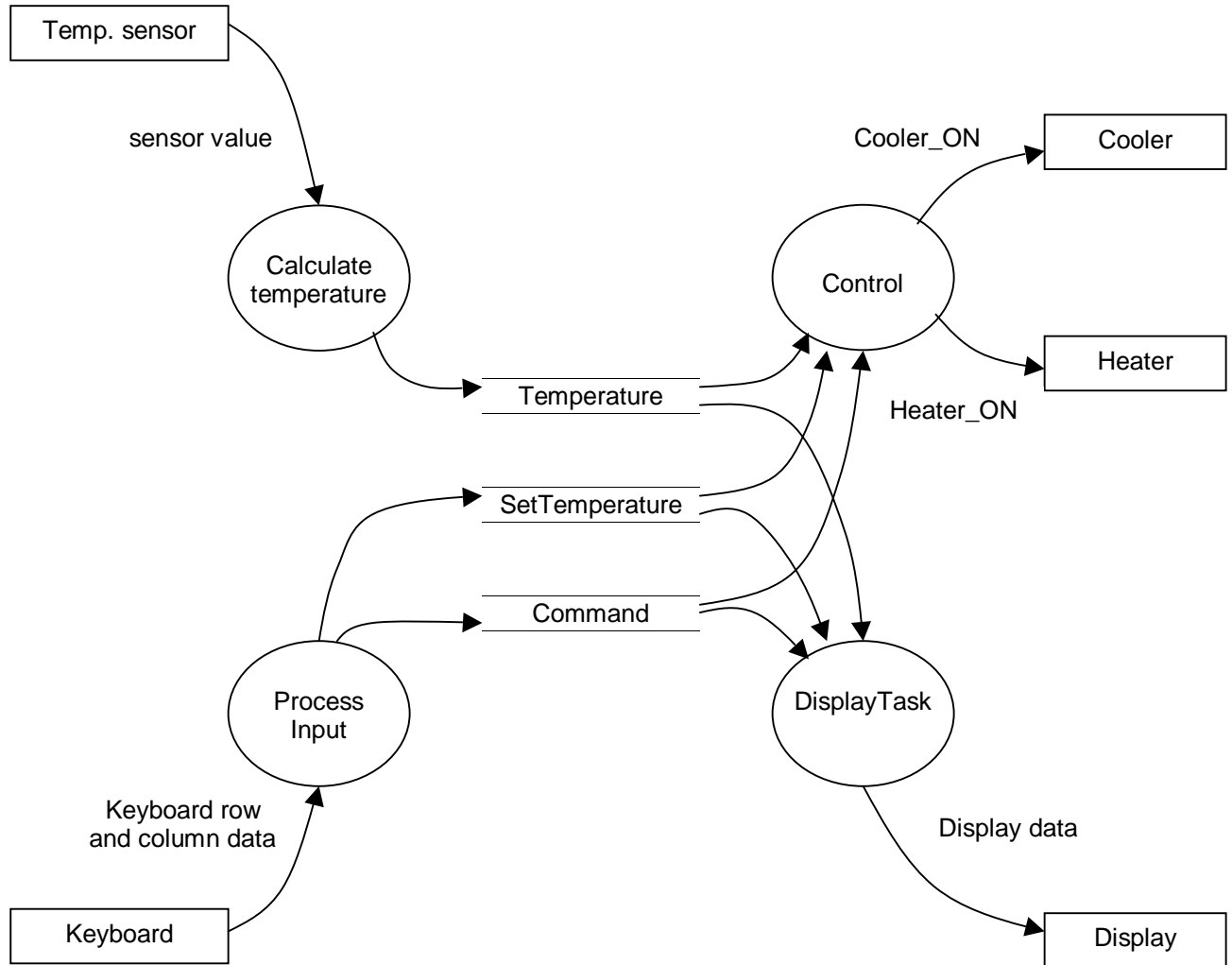


1. Data flow diagram for previously described air-conditioning system:



2. System inputs are:

- D1 and D2 - vehicle detector signals (digital inputs with ON/OFF states)
- T - real time clock

Digital outputs (with ON/OFF states) are:

- G1, G2 - GREEN light control signals
- Y1, Y2 - YELLOW light control signals
- YB1, YB2 - YELLOW blinking light control signals (caution lights)
- R1, R2 - RED light control signals

